

Tips & Tricks

uView System

Quickly switch between
landscape and **portrait** modes.

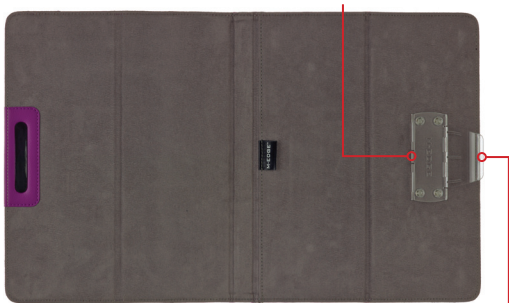


M-EDGE

medgestore.com/uview

Parts & Features

Attachment Clip



Release tab

Mount



Mounting
Corners

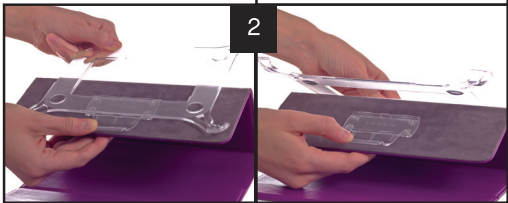
Switching from Landscape to Portrait Mode:

1

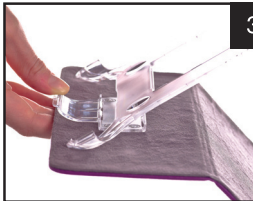


Landscape

2

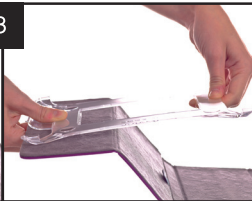


Remove mount from attachment clip by pressing down firmly on the release tab with one hand and holding the mount securely with the other hand, snap apart.



Holding mount at a slight angle, align with center of release tab. Snap into place.

The snap sound lets you know that your mount is secure.



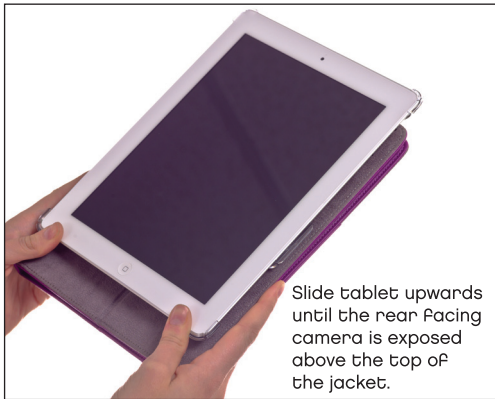
To change back to landscape mode, simply repeat steps 2 and 3, but reinsert in landscape position.

Inserting your iPad



Simply lay the iPad on the uView mount and snap all four corners in place. Your iPad will initially be in landscape mode.

Rear-Camera Use



For more detailed
instructions on using
your uView, go to

medgestore.com/uView

or call **1.877.633.4343**

M-EDGE